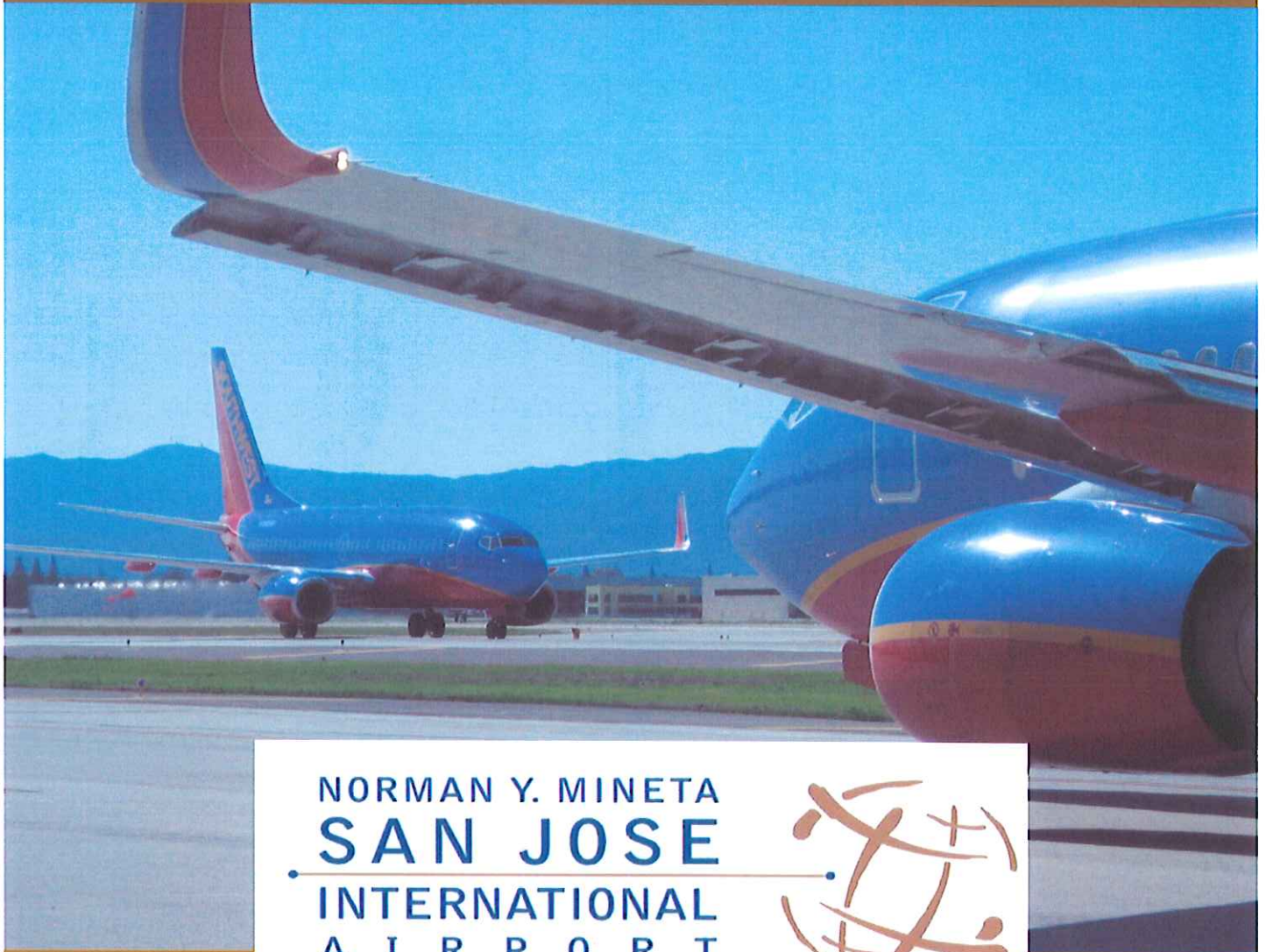


COMPLIANCE WITH PROCEDURES REPORT



NORMAN Y. MINETA
SAN JOSE
INTERNATIONAL
A I R P O R T



4th QUARTER 2015

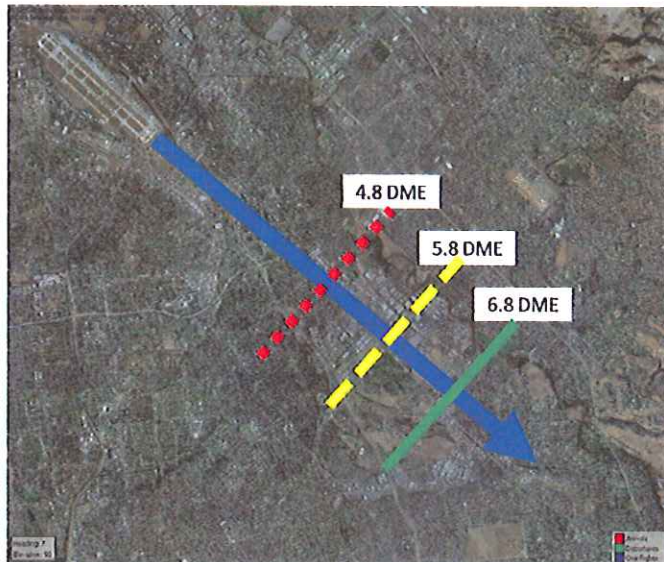
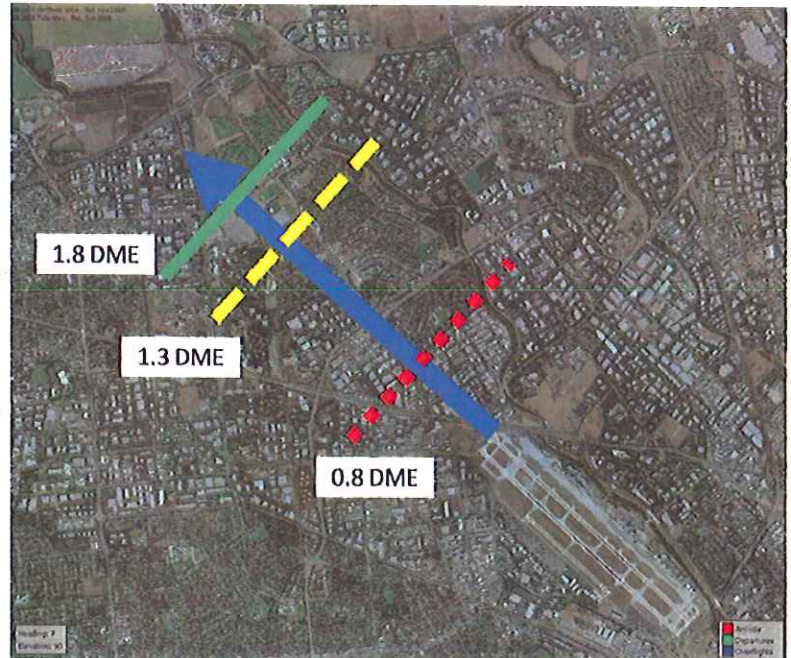
Compliance with Procedures Ratings

Runway 30L/R Departures:

In order to evaluate each airlines performance when flying this departure, “gates” were set up on the departure route. Aircraft depart Runway 30L/R on a heading of 303 degrees until reaching 1.8 DME; at this point the aircraft starts a right turn toward the east. Three separate gates were setup along the departure corridor starting at 0.8 DME followed by 1.3 DME and ending with 1.8 DME. These gates determine when aircraft turn early and is used to determine how well the departure corridor was utilized.

Gate Grading:

0.8 DME - Poor
1.3 DME - Marginal
1.8 DME - Good



Runway 12L/R Departures:

When departing to the south each airlines performance is graded based upon three “gates”; 4.8 DME, 5.8 DME and the 6.8 DME. These gates determine when aircraft turn early and determines how well the aircraft flew the departure.

Gate Grading:

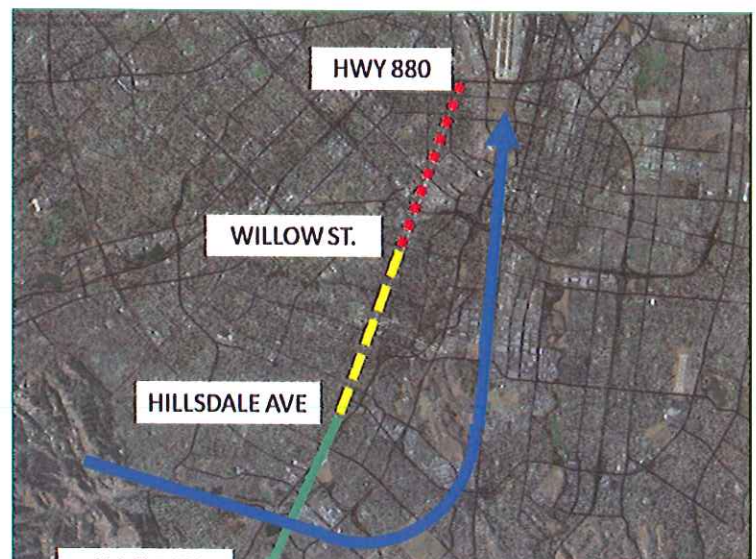
4.8 DME - Poor
5.8 DME - Marginal
6.8 DME - Good

Fairgrounds Visual Arrivals:

Aircraft arriving from the North can fly the Fairgrounds Visual Approach, a published visual approach keeps aircraft within a general corridor. Three “gates” were established; any aircraft penetrating the gate between Hwy 880 and Willow St is considered poor; between Willow St and Hillsdale Ave is marginal and between Hillsdale Ave and Almaden Expressway is considered good.

Gate Grading:

Between Hwy 880 and Willow St - Poor
Between Willow St and Hillsdale Ave - Marginal
Between Hillsdale Ave and Almaden Exp - Good



**Compliance with Procedures
Runway 30L/R Departures
Fourth Quarter 2015**

AIRLINE	TOTAL	GOOD	MARGINAL	POOR
	1096	99%	1%	0%
	80	100%	0%	0%
	882	99%	1%	0%
	45	100%	0%	0%
	569	98%	2%	0%
	113	98%	2%	0%
	154	100%	0%	0%
	150	100%	0%	0%
	372	97%	3%	0%
	646	99%	1%	0%
	5246	97%	3%	0%
	324	98%	2%	0%
	95	98%	2%	0%
	45	100%	0%	0%
	92	97%	3%	0%
TOTAL	9909			
AVERAGE		99%	1%	0%

**Compliance with Procedures
Runway 12L/R Departures
Fourth Quarter 2015**

AIRLINE	TOTAL	GOOD	MARGINAL	POOR
	132	100%	0%	0%
	9	100%	0%	0%
	100	100%	0%	0%
	55	100%	0%	0%
	4	100%	0%	0%
	11	100%	0%	0%
	7	100%	0%	0%
	39	95%	5%	0%
	50	98%	2%	0%
	466	97%	3%	0%
	23	100%	0%	0%
	6	100%	0%	0%
	6	100%	0%	0%
TOTAL	908			
AVERAGE		97%	3%	0%

Compliance with Procedures Fairgrounds Visual Fourth Quarter 2015

AIRLINE	TOTAL	GOOD	MARGINAL	POOR
	392	98%	2%	0%
	7	100%	0%	0%
	2	100%	0%	0%
	6	100%	0%	0%
	3	100%	0%	0%
	61	100%	0%	0%
	28	98%	2%	0%
	88	95%	5%	0%
	234	95%	5%	0%
	5	100%	0%	0%
TOTAL	826			
AVERAGE		95%	5%	0%