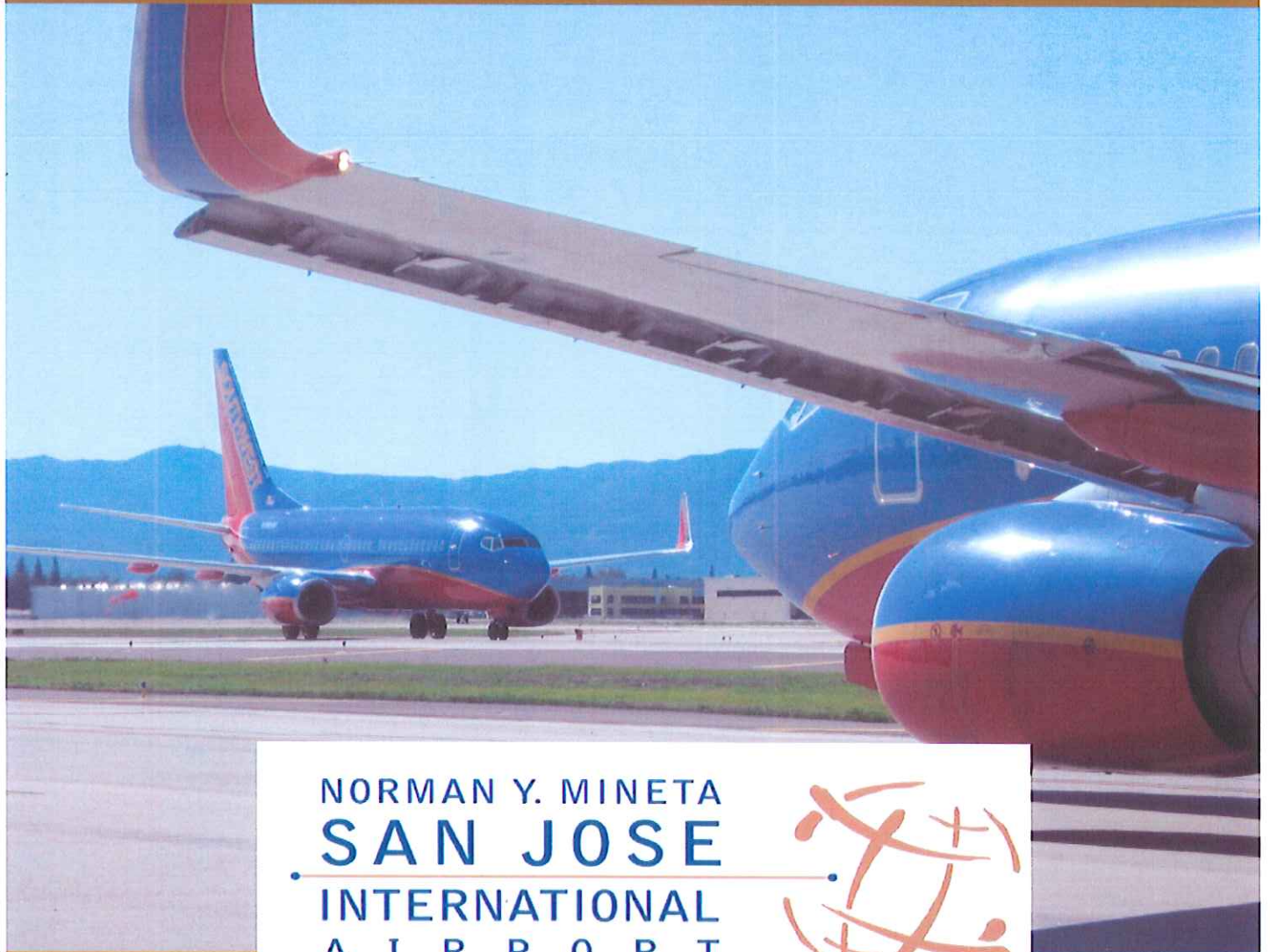


COMPLIANCE WITH PROCEDURES REPORT



NORMAN Y. MINETA
SAN JOSE
INTERNATIONAL
A I R P O R T



3rd QUARTER 2015

Compliance with Procedures Ratings

Runway 30L/R Departures:

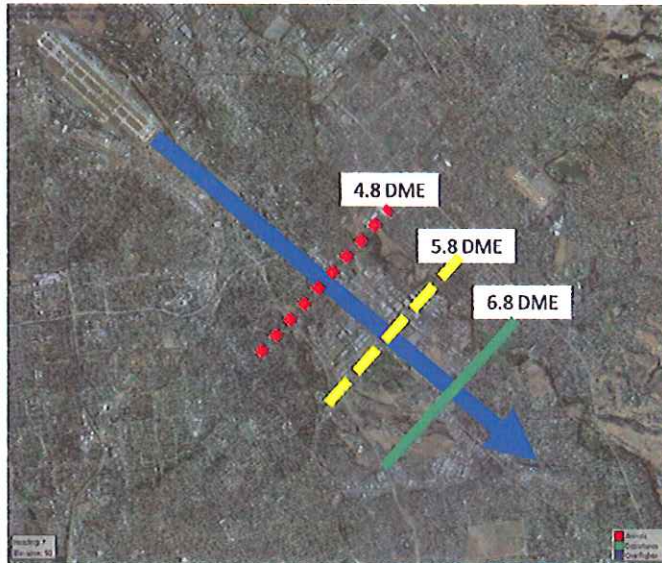
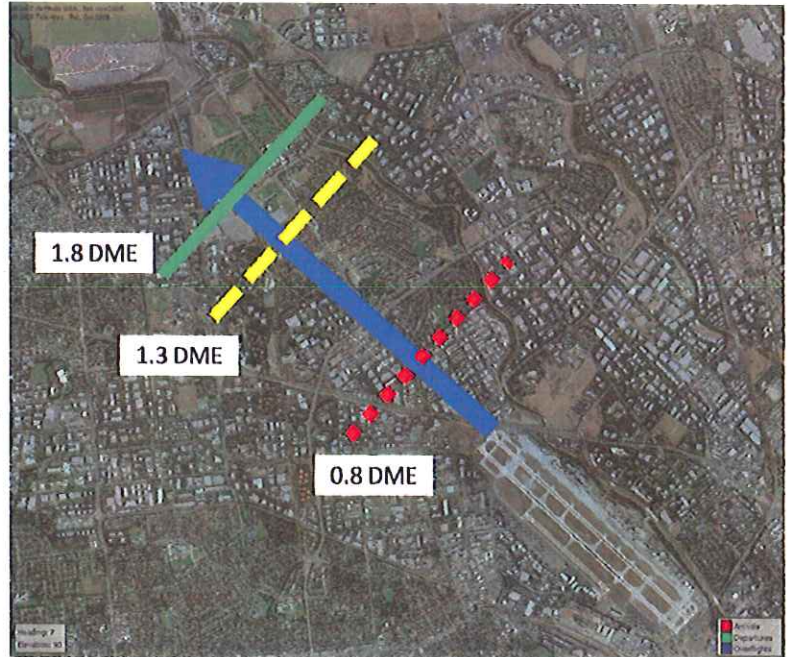
In order to evaluate each airlines performance when flying this departure, “gates” were set up on the departure route. Aircraft depart Runway 30L/R on a heading of 303 degrees until reaching 1.8 DME; at this point the aircraft starts a right turn toward the east. Three separate gates were setup along the departure corridor starting at 0.8 DME followed by 1.3 DME and ending with 1.8 DME. These gates determine when aircraft turn early and is used to determine how well the departure corridor was utilized.

Gate Grading:

0.8 DME - Poor

1.3 DME - Marginal

1.8 DME - Good



Runway 12L/R Departures:

When departing to the south each airlines performance is graded based upon three “gates”; 4.8 DME, 5.8 DME and the 6.8 DME. These gates determine when aircraft turn early and determines how well the aircraft flew the departure.

Gate Grading:

4.8 DME - Poor

5.8 DME - Marginal

6.8 DME - Good

Fairgrounds Visual Arrivals:

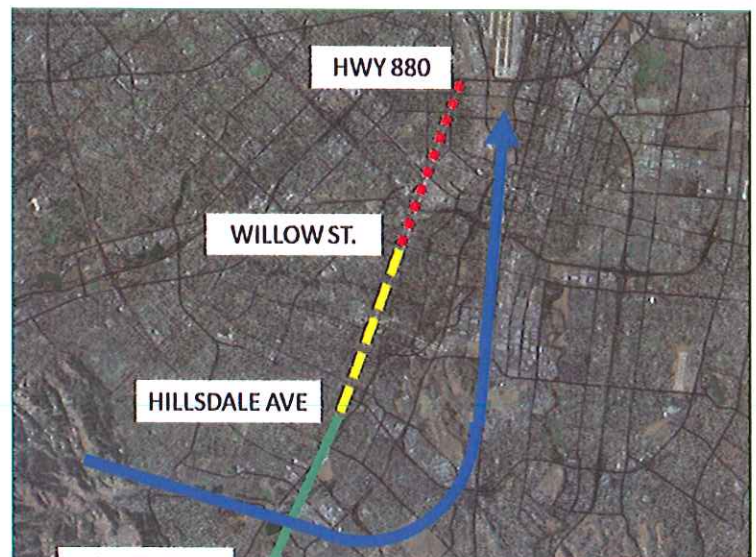
Aircraft arriving from the North can fly the Fairgrounds Visual Approach, a published visual approach keeps aircraft within a general corridor. Three “gates” were established; any aircraft penetrating the gate between Hwy 880 and Willow St is considered poor; between Willow St and Hillsdale Ave is marginal and between Hillsdale Ave and Almaden Expressway is considered good.

Gate Grading:
















Between Hwy 880 and Willow St - Poor

Between Willow St and Hillsdale Ave - Marginal

Between Hillsdale Ave and Almaden Exp - Good



**Compliance with Procedures
Runway 30L/R Departures
Third Quarter 2015**

AIRLINE	TOTAL	GOOD	MARGINAL	POOR
	1163	98%	2%	0%
	89	100%	0%	0%
	928	95%	5%	0%
	60	100%	0%	0%
	401	100%	0%	0%
	107	89%	11%	0%
	113	100%	0%	0%
	166	93%	7%	0%
	298	99%	1%	0%
	1262	95%	5%	0%
	5104	92%	8%	0%
	351	99%	1%	0%
	62	99%	1%	0%
	2	100%	0%	0%
	83	98%	2%	0%
TOTAL	10189			
AVERAGE		99%	1%	0%

**Compliance with Procedures
Runway 12L/R Departures
Third Quarter 2015**

AIRLINE	TOTAL	GOOD	MARGINAL	POOR
	175	99%	1%	0%
	7	100%	0%	0%
	121	99%	1%	0%
	46	100%	0%	0%
	3	100%	0%	0%
	11	99%	1%	0%
	7	100%	0%	0%
	84	97%	3%	0%
	198	98%	2%	0%
	494	97%	3%	0%
	37	100%	0%	0%
	2	100%	0%	0%
	6	100%	0%	0%
	1	100%	0%	0%
TOTAL	1192			
AVERAGE		97%	3%	0%

**Compliance with Procedures
Fairgrounds Visual
Third Quarter 2015**

AIRLINE	TOTAL	GOOD	MARGINAL	POOR
	412	98%	2%	0%
	5	100%	0%	0%
	2	100%	0%	0%
	2	100%	0%	0%
	57	100%	0%	0%
	110	98%	2%	0%
	135	95%	5%	0%
	288	94%	6%	0%
TOTAL	1011			
AVERAGE		95%	5%	0%